



# Capital Care

NEW CAPITAL | R3 AREA





# DEVELOPERS

- **Hendaza Investment & Urban Developments**  
“Specialized in construction & Real Estate Developments” Cairo, EGYPT.
- **Eye of the World**  
“Specialized in healthcare facilities management” Dubai, UAE.

# VISION

**“Health care is too important to be integrated  
as Real Estate development“**

Capital care vision to establish state of art healthcare facility buildings coping with the medical revolution demands and at the same time respecting the Egyptian medical fields specialty needs. Capital care vision to be the first specialized developer in healthcare facility buildings.



# MISSION

“Is to introduce new buildings design approaches strategies that reflects the Rapid changes in medical field”

Capital care medical complex aims to develop a health facility building that will be an answer to a lot of medical field growing requirements. In collaboration with first class healthcare designers and doctors we are designing a building that reflects modern architecture & integrating smart solutions for the Egyptian medical field.



# METHODOLOGY

*“THE POWER OF CUSTOMIZED DESIGN”*

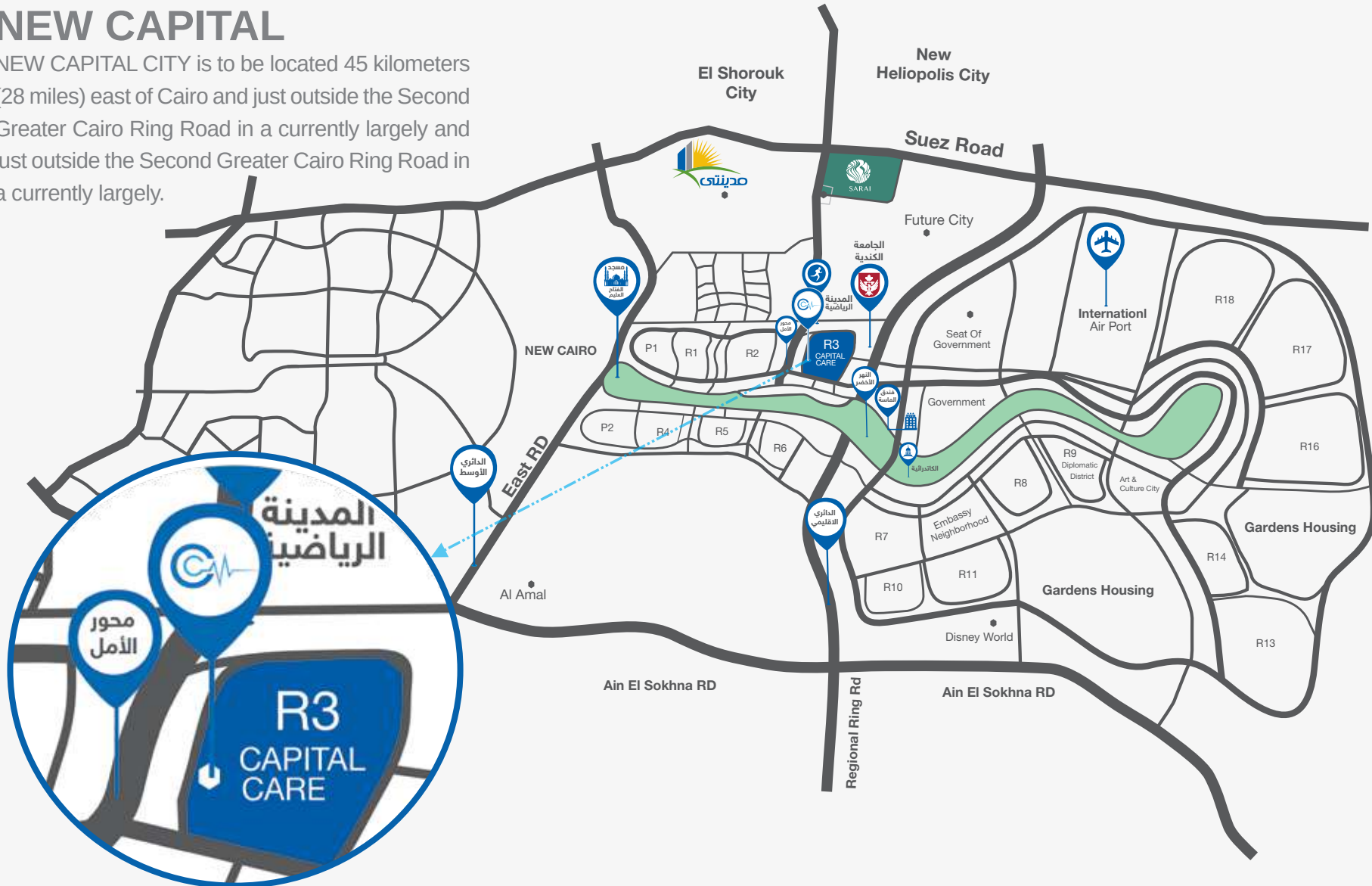
The medical planners of the project adapted customized design approach in order to provide wide range of architecture solutions that suit all types and levels of health facilities aiming to join the capital care complex.



# LOCATION

## NEW CAPITAL

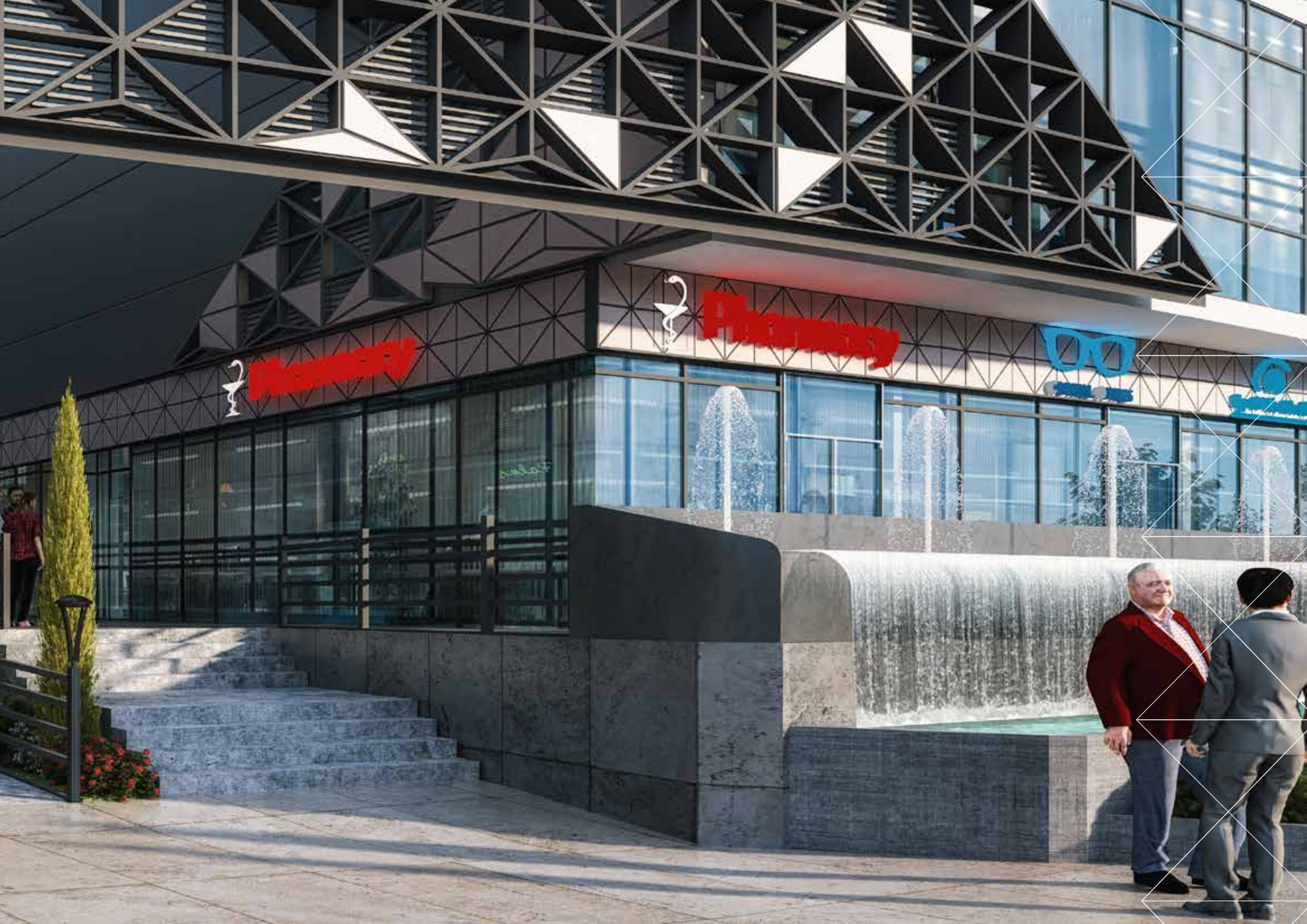
NEW CAPITAL CITY is to be located 45 kilometers (28 miles) east of Cairo and just outside the Second Greater Cairo Ring Road in a currently largely and just outside the Second Greater Cairo Ring Road in a currently largely.









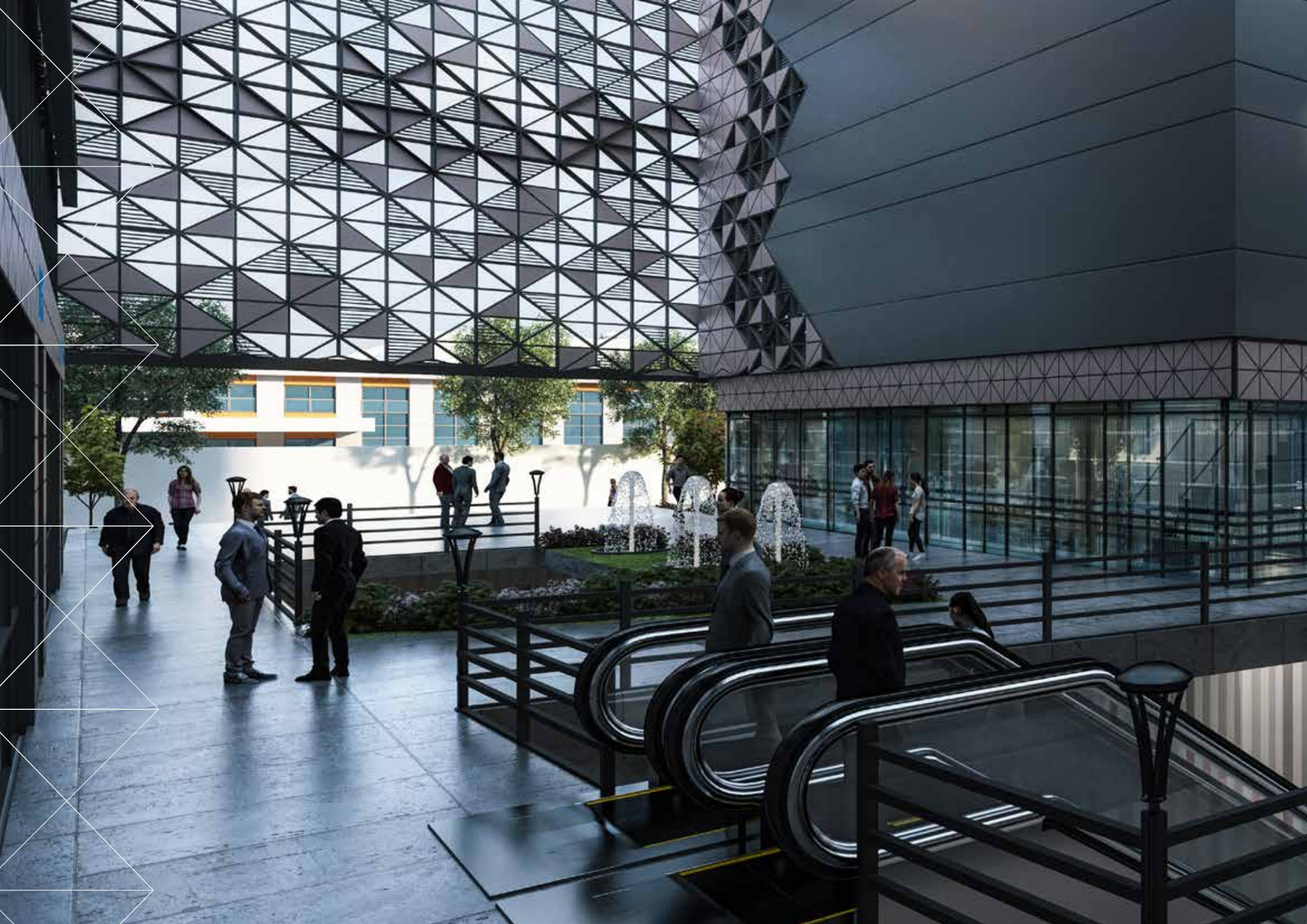


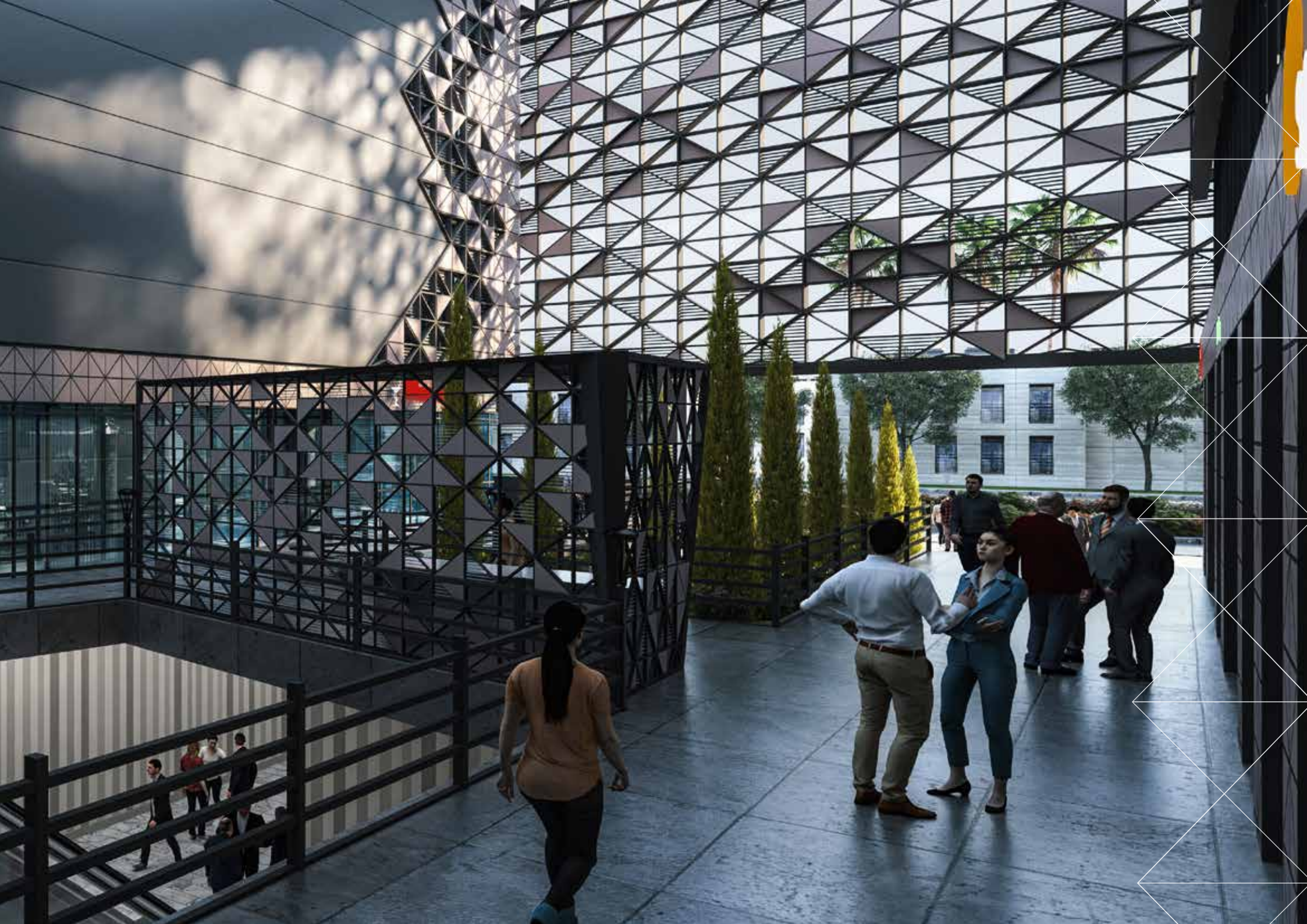
Pharmacy



Pharmacy

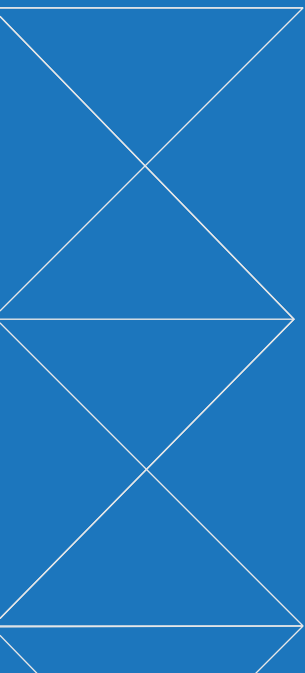






# SATELLITE MEDICAL CENTRE (SMC)

- *All satellite medical centres meet all requirements of ministry of health decree no 402 for year 2015.*
- *All satellite medical centre will be offered to have:*
  - *Its own dedicated entrance choosing between the street entrance, plaza entrance or both.*
  - *Membership in Capital care complex general services ( laundry, medical waste management, morgue, meeting rooms,...).*
  - *Their own vertical circulation elements .*
  - *Its own MEP facilities (i.e.: mechanical & electrical & plumbing ).*
  - *Its own HVAC facilities (i.e. heating, ventilation and air Conditioning,).*
  - *Floor heights and plans were designed to meet with wide range of medical equipment requirements (ex: Cath Lab, Class A operations, Renal dialyses, sophisticated diagnostic medical equipments.....,etc.).*

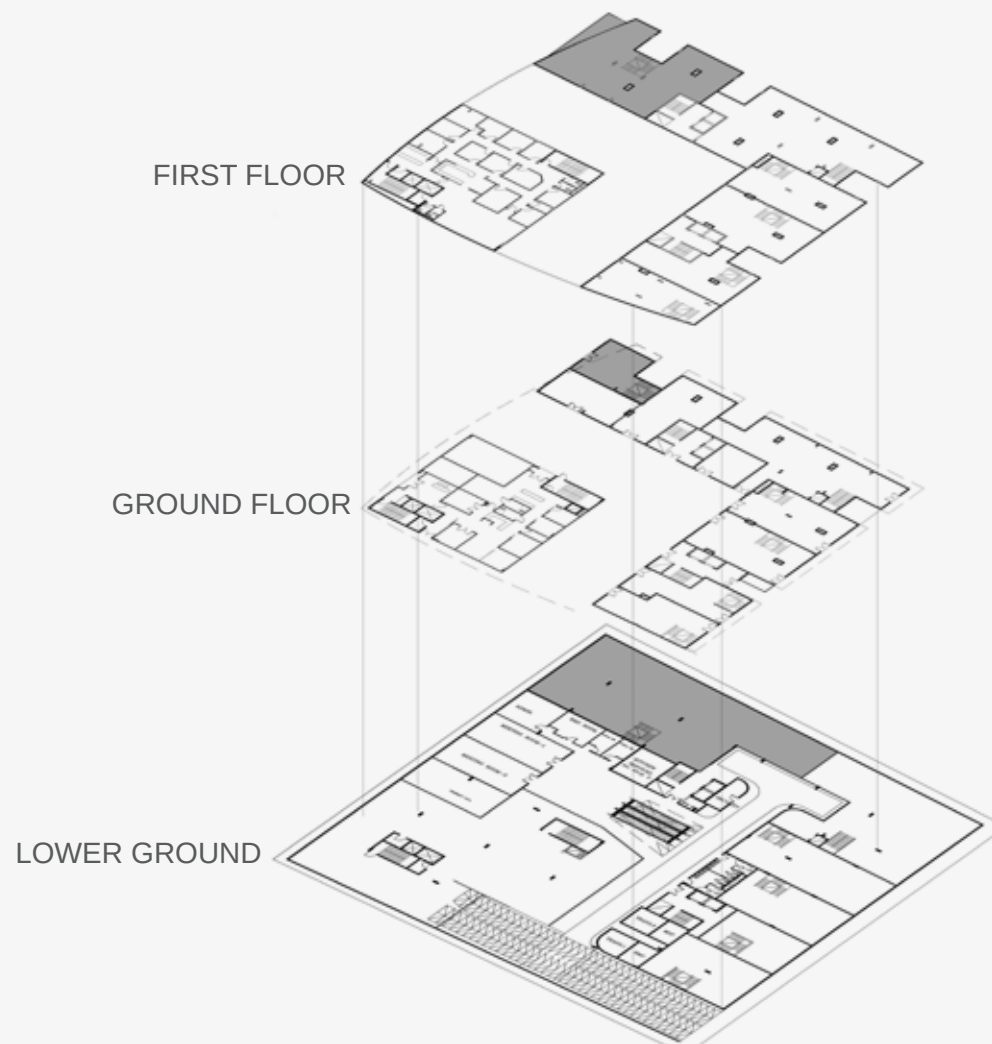




# SMC

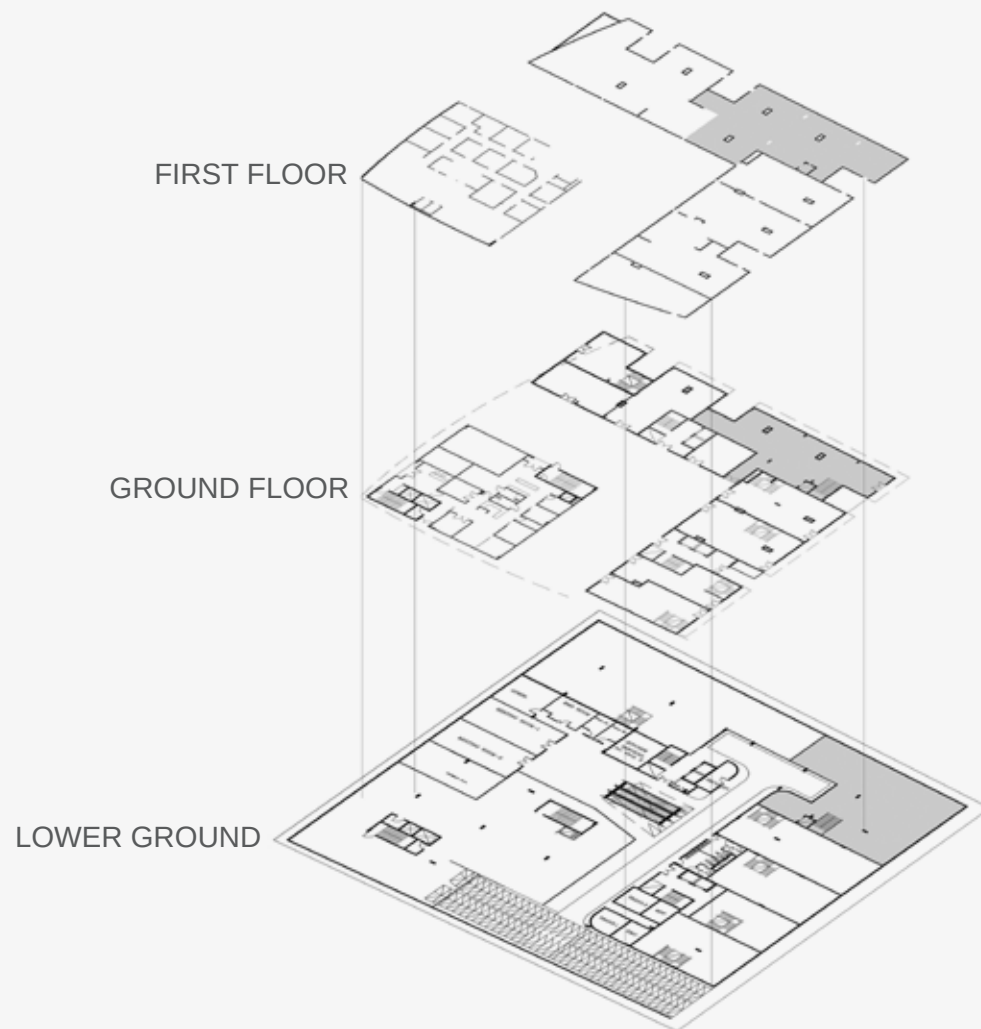
## MODEL 1

TERRACE	41 M <sup>2</sup>
1ST CLOSED	390 M <sup>2</sup>
GROUND	115 M <sup>2</sup>
-1	745 M <sup>2</sup>
<b>GROSS AREAS</b>	<b>1250 M<sup>2</sup></b>



# SMC

MODEL 2

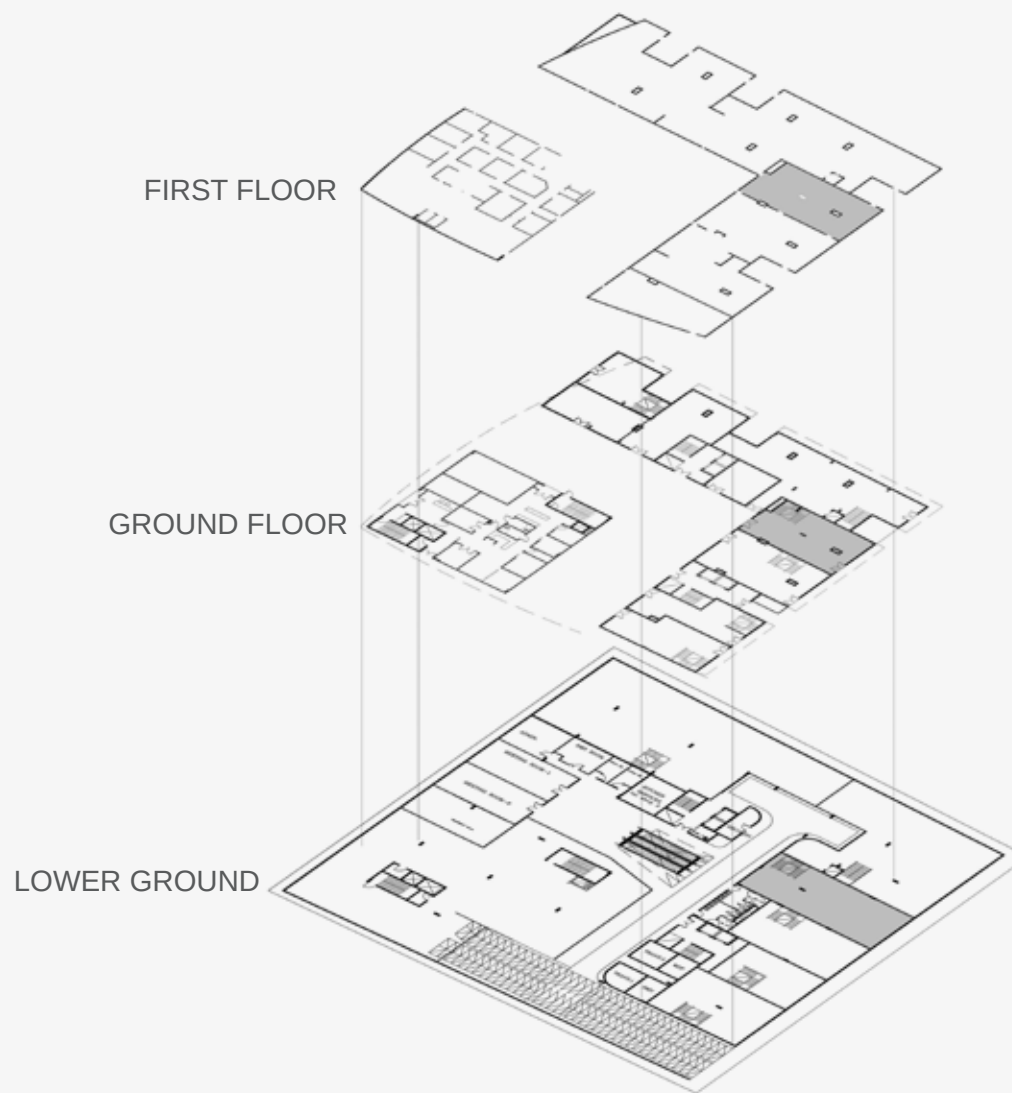


1ST CLOSED	476 M <sup>2</sup>
GROUND	349 M <sup>2</sup>
-1	548 M <sup>2</sup>
<b>GROSS AREAS</b>	<b>1373 M<sup>2</sup></b>

# SMC

## MODEL 3

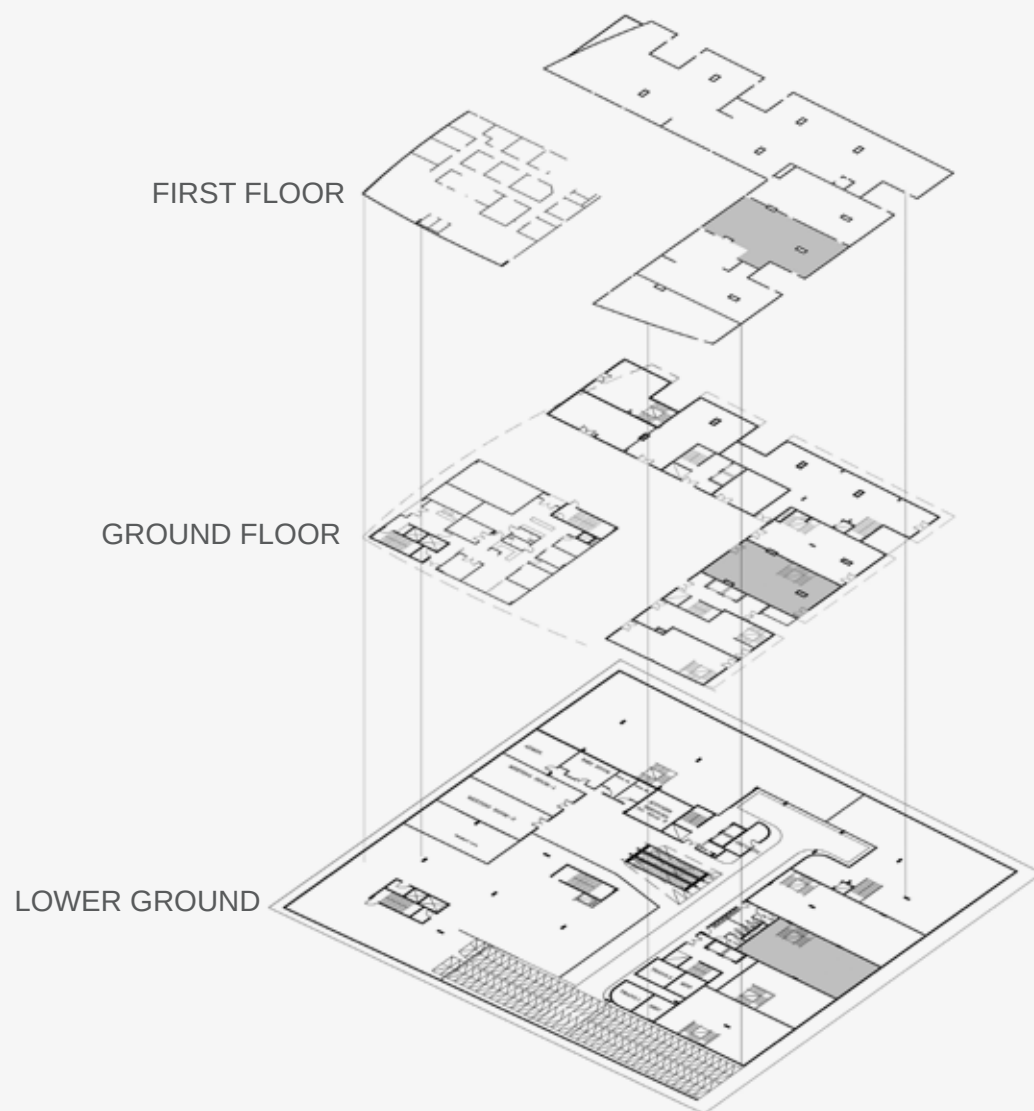
1ST CLOSED	207 M <sup>2</sup>
GROUND	191 M <sup>2</sup>
-1	273 M <sup>2</sup>
<b>GROSS AREAS</b>	<b>671 M<sup>2</sup></b>





# SMC

## MODEL 4

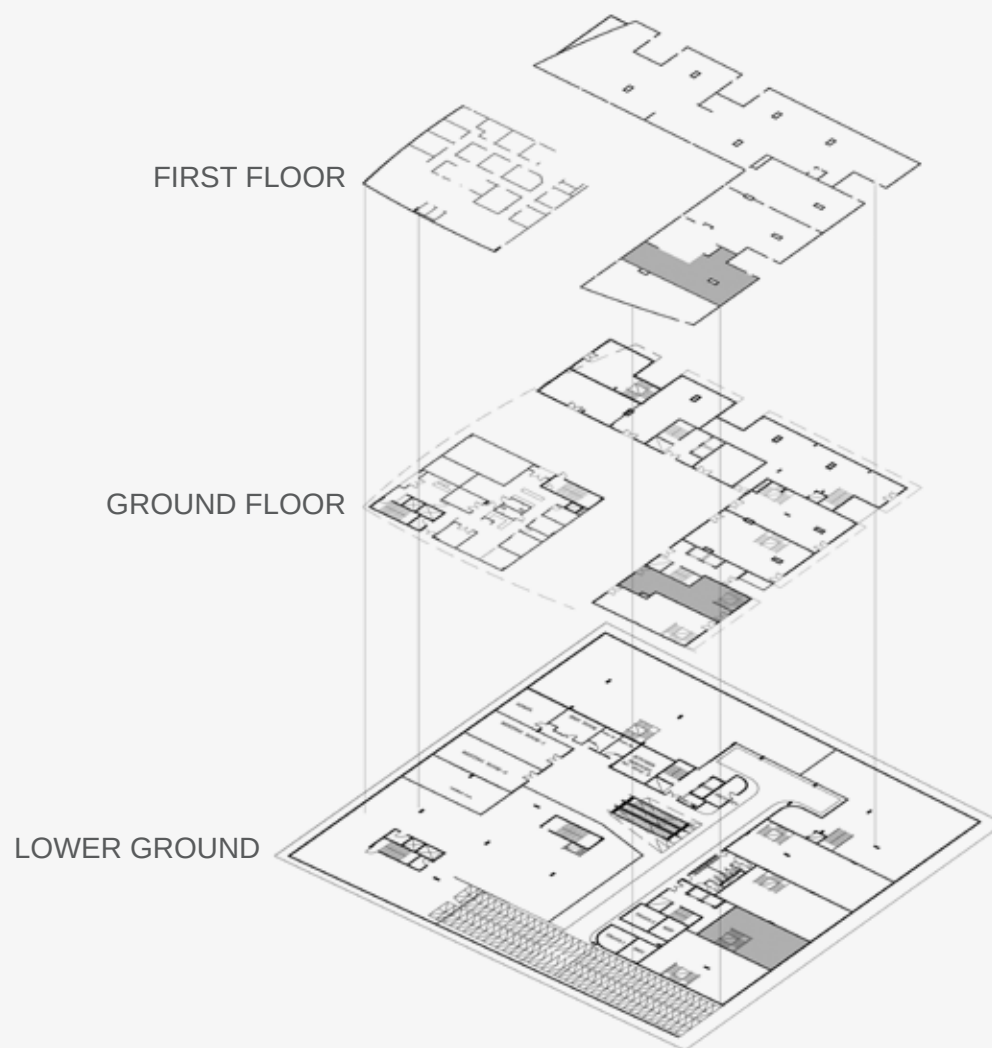


1ST CLOSED	223 M <sup>2</sup>
GROUND	193 M <sup>2</sup>
-1	205 M <sup>2</sup>
<b>GROSS AREAS</b>	<b>621 M<sup>2</sup></b>

# SMC

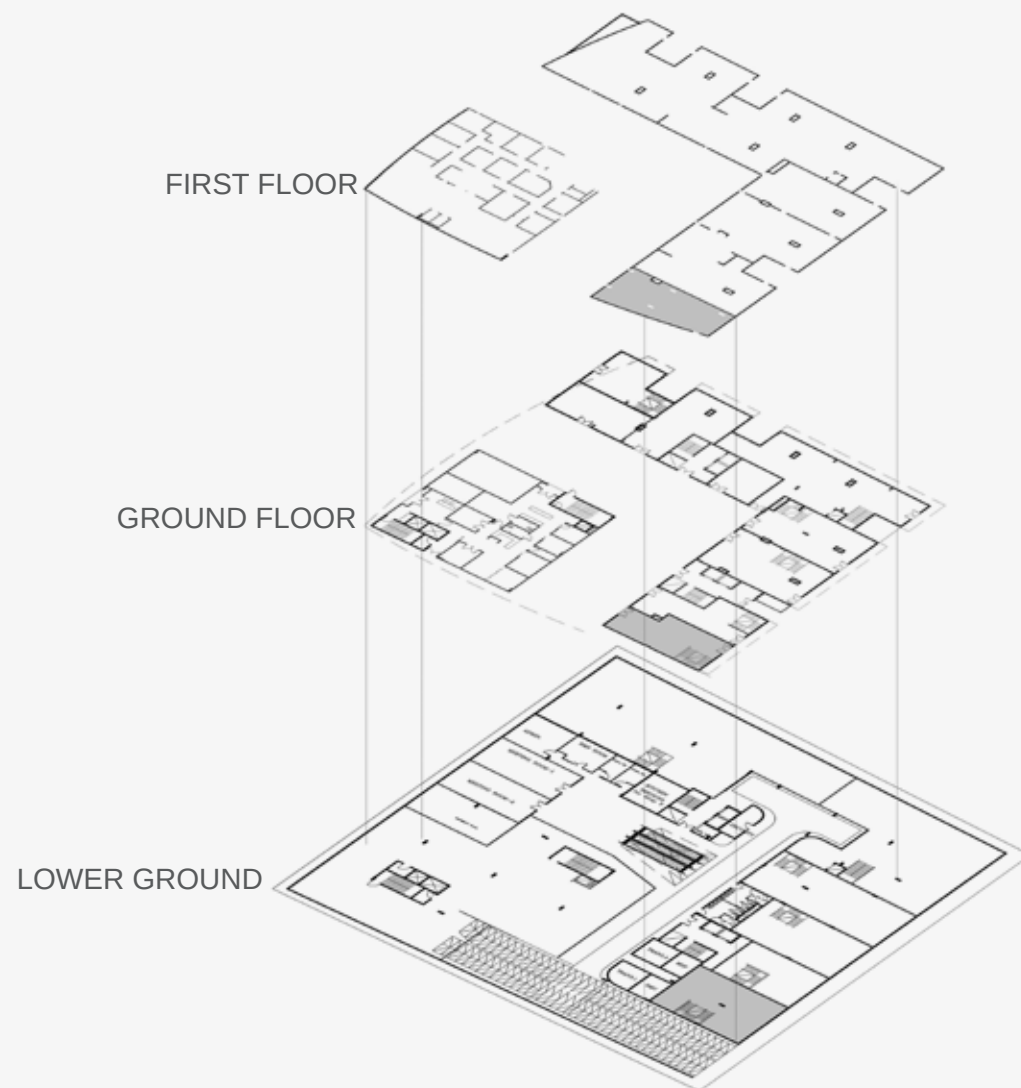
## MODEL 5

1ST CLOSED	169 M <sup>2</sup>
GROUND	133 M <sup>2</sup>
-1	149 M <sup>2</sup>
<b>GROSS AREAS</b>	<b>452 M<sup>2</sup></b>



# SMC

MODEL 6



1ST CLOSED	169 M <sup>2</sup>
GROUND	144 M <sup>2</sup>
-1	212 M <sup>2</sup>
<b>GROSS AREA</b>	<b>525 M<sup>2</sup></b>



# CLINICS

- Flexible areas starting from 48 Sqm for clinics.
- Different options for clinics layouts that reflect the correct patient /doctor work flows:
  - All exam areas in clinics are designed to support the right location of examination stretcher (right hand side of the doctor).
  - All clinics have toilet to be used by doctor or patient if needed.
  - Reasonable waiting areas inside the clinic and backup general waiting are connected with audio systems to clinics.
  - All clinics have natural light.
- Fully finished clinics with materials that meet the international codes of the high Gene and infection control.
- General toilets that meet the requirements of assisted and handicapped visitors.
- Digital boards for every clinic.

# CLINICS




FLOOR PLAN

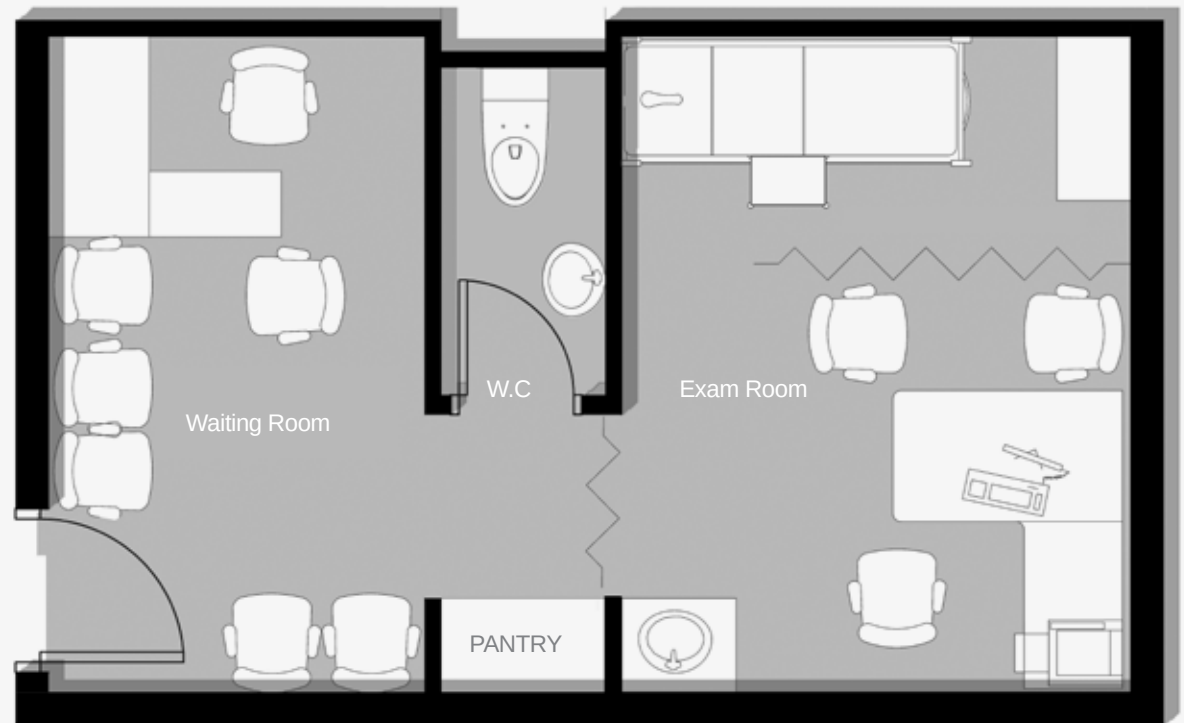


# CLINICS

## MODEL 1

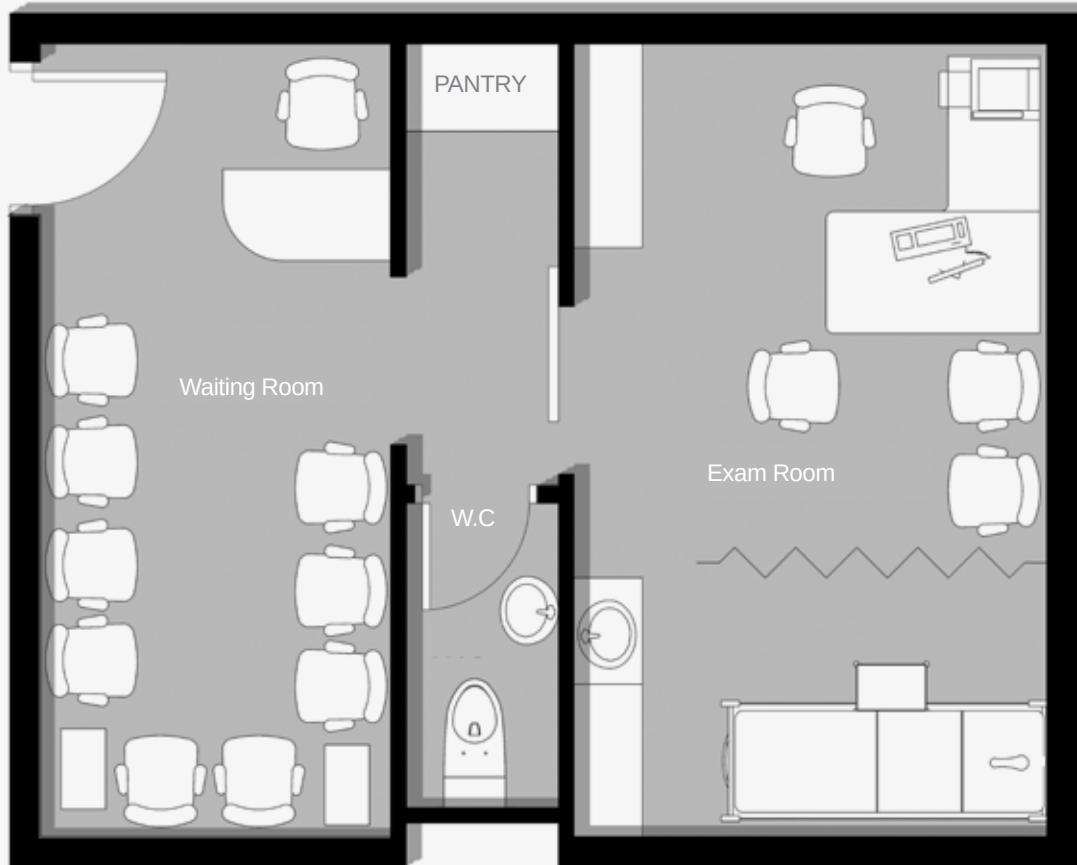
- E.N.T
- OPHTHALMOLOGY
- DENTAL
- INTERNAL MEDICINE:
  - CARDIOLOGY
  - NEUROLOGY
  - ENDOCRINOLOGY ...ETC

	WAITING ROOM	2.35 X 4.20 M <sup>2</sup>
	EXAM ROOM	3.55 X 4.20 M <sup>2</sup>
	WC + PANTRY	1.10 X 4.20 M <sup>2</sup>
GROSS AREA		48 M <sup>2</sup>





# CLINICS

## MODEL 2



- GYNA
- OPHTHALMOLOGY
- ENT
- DENTAL
- INTERNAL MEDICINE:
  - CARDIOLOGY
  - NEUROLOGY
  - ENDOCRINOLOGY...ETC

	WAITING ROOM	2.35 X 5.42 M <sup>2</sup>
	EXAM ROOM	3.55 X 5.42 M <sup>2</sup>
<b>WC</b>	WC+ PANTRY	1.1 X 5.42 M <sup>2</sup>
<b>GROSS AREA</b>		<b>62 M<sup>2</sup></b>

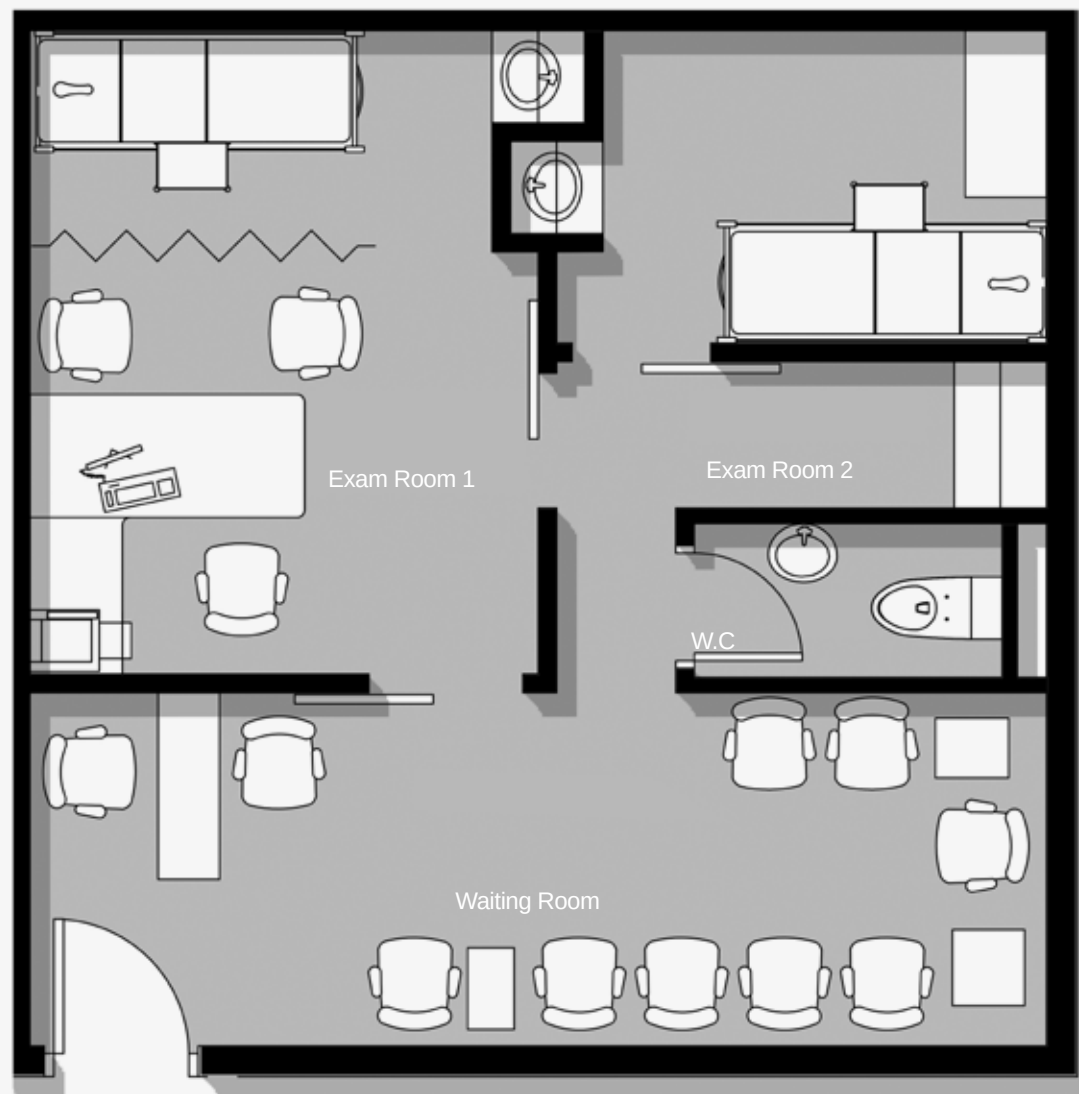
# CLINICS

## MODEL 3

This Clinic support the work flow of any specialty that needs simple diagnostic investigation or procedure

- Ultra sound investigation
- Derma procedure
- EEC, holter ...etc

GROSS AREA	77 M <sup>2</sup>
DIMENSION	6.90 M X 7.00 M <sup>2</sup>





# CLINICS

## MODEL 4



GROSS AREA

152 M<sup>2</sup>

This Clinic support the work flow of any specialty that needs simple diagnostic investigation or procedure

- Ultra sound investigation
- Derma procedure
- EEC, holter ...etc



# CLINICS

## MODEL 5

This Clinic support the work flow of any specialty that needs simple diagnostic investigation or procedure

- Ultra sound investigation
- Derma procedure
- EEC, holter ...etc



GROSS AREA

214 M<sup>2</sup>

# FACILITIES AND SERVICES

- Central waste management
- Stand by Ambulance
- Medical gases
- Medical laundry
- Morgue
- Meeting rooms
- Public waiting areas
- SPA and Gym
- Kids Area
- Fire fighting
- Facility management (BMS - Security –CCTV smart system)
- ECO structure smart system



**CENTRAL  
WASTE MANAGEMENT**

# A STAND BY AMBULANCE UNIT





**MEDICAL  
GASES**



# MEDICAL LAUNDRY



MORGUE





# MEETING ROOM

# PUBLIC WAITING AREAS



# KIDS AREA



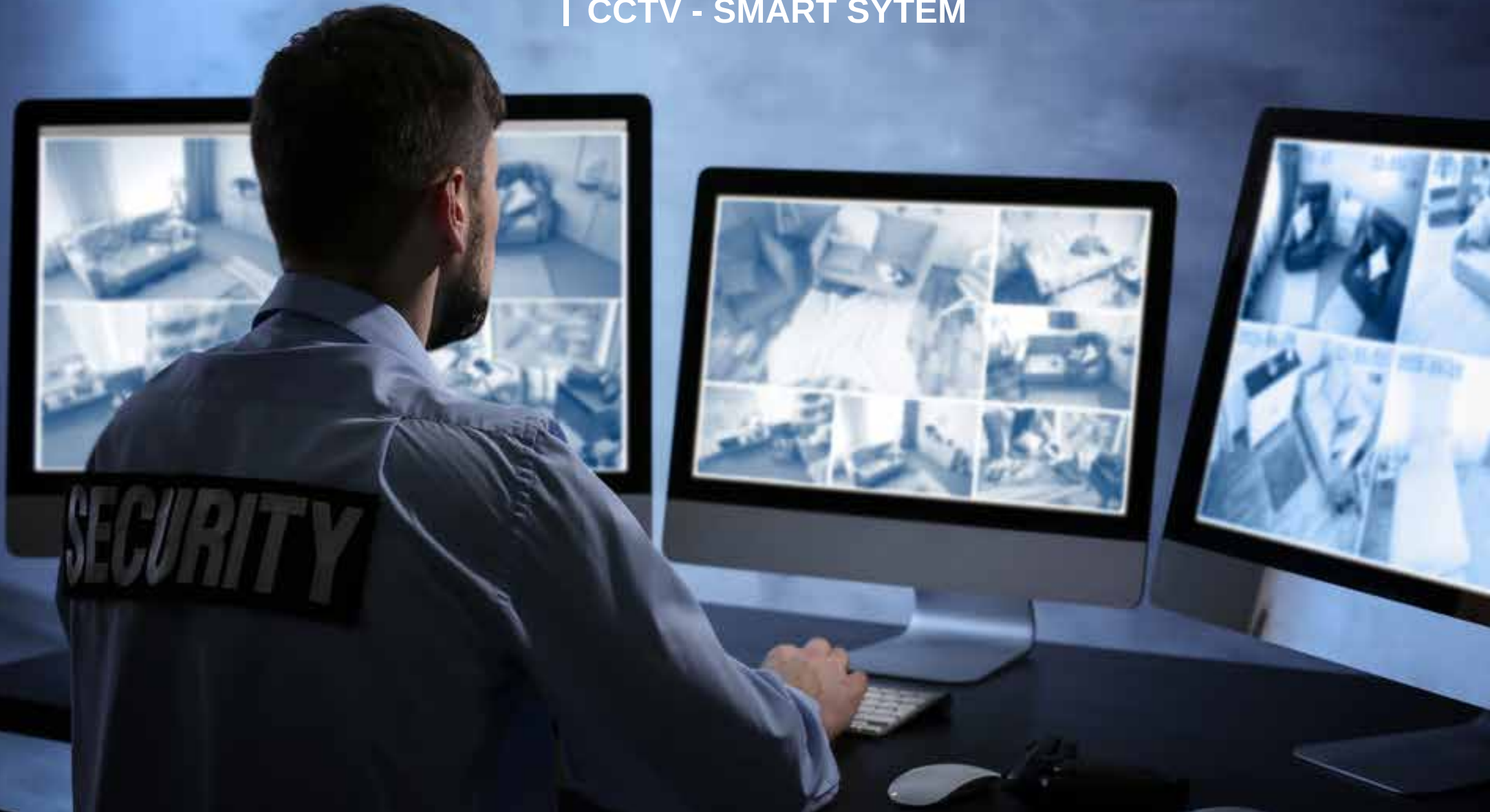
# FIRE FIGHTING AND FIRE ALARM SYSTEMS



# FACILITY MANAGEMENT

BMS - SECURITY

CCTV - SMART SYTEM



A photograph of an underground parking garage. In the foreground on the right, the rear of a white SUV is visible, showing its taillight and bumper. The car is parked in a space marked with white lines on the floor. The background is filled with other cars parked in rows, with some lights creating a bokeh effect. The ceiling of the garage has exposed pipes and lights. The overall lighting is dim and blue-toned.

**UNDERGROUND  
PARKING**



FITNESS  
GYM